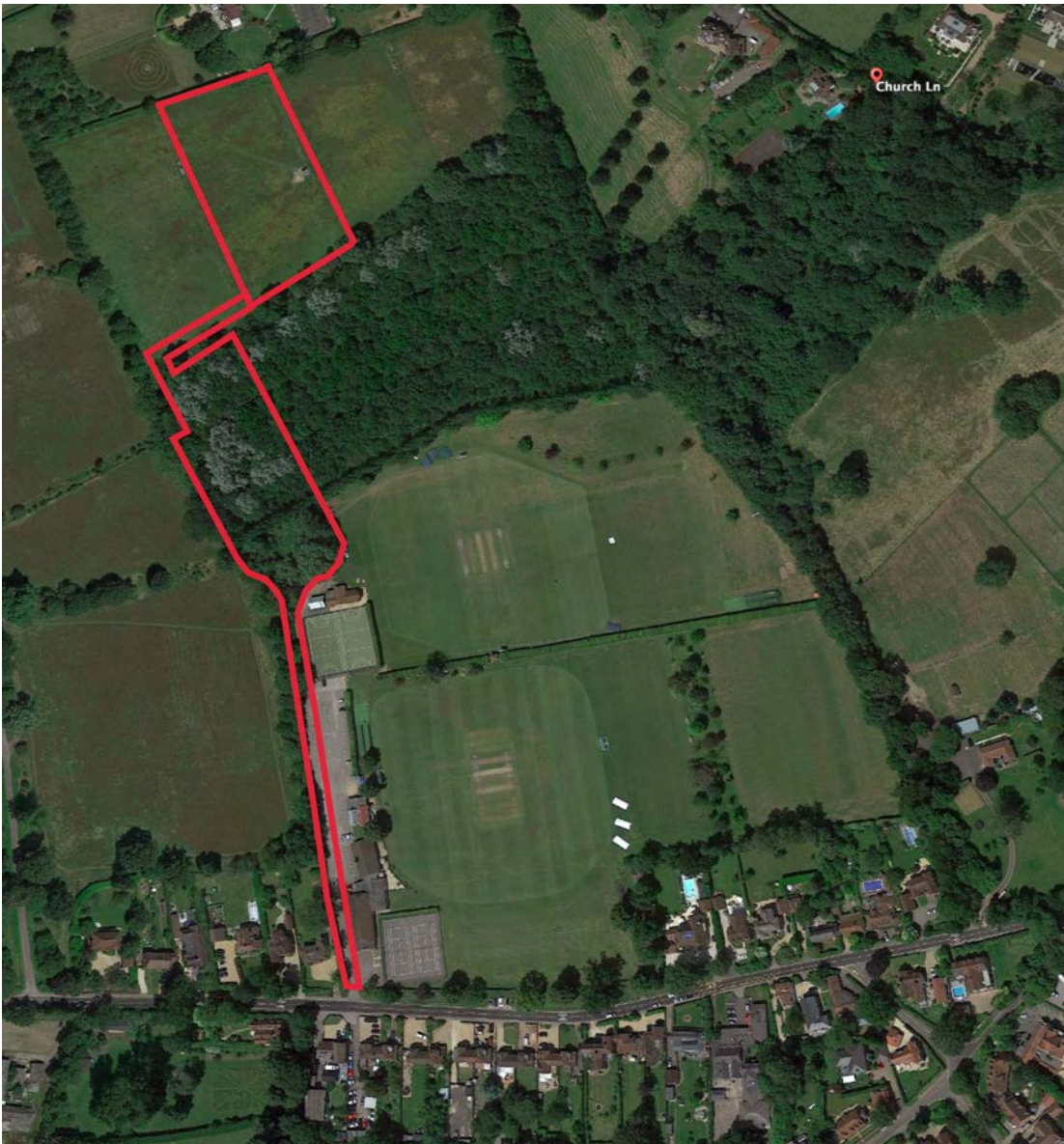


**1061K_D03_ACTIVITY DESCRIPTION STATEMENT:
DOG_WALKING ACTIVITIES AT:
HIGH BARN, CHURCH LANE, FINCHAMPSTEAD, WOKINGHAM, RG40 4LR**

SUPPORTING DOCUMENTS

This Statement to be read in conjunction with 1061K_D01A_Design and Access Statement and submitted drawings no 1061K-01B, -02B and -03B.

The purpose of this Statement is to better illustrate the simple procedural and secure movements that comprise the entry and leaving of the proposal site by the Professional Handlers and their dogs in charge, demonstrating that there is at no point any potential for interaction with, or nuisance to be caused to, any parties beyond the occupants of the application site.



The Proposal Site is shown edged in red (including access route.)
See also Drawing 1061K-01A, -02A and -03.

The redline on the aerial view of the site above shows the extent of the zone in which the activities will take place, and that zone is wholly within the Applicant's ownership.

The Dog-handlers, whose professional credentials are described in the accompanying Design and Access Statement, enter the site by motor vehicle from a southerly direction off the B3348 highway at "The Village" via tarmac driveway with Highways-standard kerbs and vision splays, that also serves village memorial hall and sports club. See Image 1.



1. The entrance from the B3348.



2. The route past the car park, shown looking south.

As seen in Image 2., the access road passes a large tarmac car park for a distance of some 170m, at which point there is a white steel barrier gate adjacent to van-parking stances as shown in images 3 and 4.



3. Vans parked at the rear of the sports club car park area..



4 . Lightweight steel gates adjacent to van parking.

After a further 30m distance, the driveway passes the end of a playing-field enclosure and curves around a recently constructed timber-clad timber sportsclub building as shown in images 5 and 6 below.



5. Looking Southwards from the corner of the timber sportsclub building.



6. Looking North with the driveway curving behind the timber building..



7. The Dog-transport van parked beyond the timber building, ready to unload the dogs.

The dogs are unloaded into a secure compound with entrance and exit gates, as shown in images 8 and 9 below.



8. The dogs are unloaded through the galvanised steel gates into a secure compound with timber gates beyond.



9. The dogs are taken through the timber gates to the next stage of the journey.

The dogs are then led through the densely-wooded area that can be seen on the aerial view and the Image 10 below.



10. Dogs are led through the wooded area, well separated from all external fields and pathways.

At the northern end of the woodland, a four-way gate system secures crossing the footpath route. Dogs pass through the galvanised gates; timber gates control the footpath.



11. Dogs approach the footpath crossing.



12. Dogs are held securely in the compound beyond the footpath.



13. A gate in the timber fence to the north of the compound leads to the paddock areas beyond.



14. The neighbouring field with lavender crop is to the west of Paddock 1, and has a fenced boundary. Dogs pass along a fenced path within Paddock 1 to Paddock 2.

After passing securely through Paddock 1, without risk of reaching the neighbouring field, the dogs are exercised in Paddock 2, which has a secure perimeter fence.



15. Dogs are exercised in Paddock 2. The mobile shed can be seen in the background.



16. The existing mobile shed in Paddock 2 as shown on the drawings.

After the exercise period the dogs are returned via the same route for vehicle transport off the site.

.....

This page is intentionally left blank